

AP1067

Leader in Biomolecular Solutions for Life Science



# pan Phospho-Serine/Threonine Mouse mAb

Catalog No.: AP1067

5 Publications

## Basic Information

### Observed MW

> 10kDa

### Calculated MW

### Category

Monoclonal Antibody

### Applications

WB,IHC-P,ELISA

### Cross-Reactivity

Human,Mouse,Rat,Other (Wide Range Predicted)

### CloneNo number

AMC0265

## Background

Protein phosphorylation is one of the main key regulatory mechanisms by which extracellular signals are conveyed. Global alteration of signal transduction by inhibition of serine/threonine dephosphorylation has recently been shown to markedly potentiate cancer cell killing by the DNA-methylating drug, temozolomide.

## Recommended Dilutions

**WB** 1:1000 - 1:8000

**IHC-P** 1:2000 - 1:8000

**ELISA** Recommended starting concentration is 1 µg/mL. Please optimize the concentration based on your specific assay requirements.

## Immunogen Information

### Gene ID

### Swiss Prot

### Immunogen

A synthetic peptide corresponding to a sequence containing phosphorylated Serine/Threonine.

### Synonyms

## Contact

 [www.abclonal.com](http://www.abclonal.com)

## Product Information

### Source

Mouse

### Isotype

IgG2b,kappa

### Purification

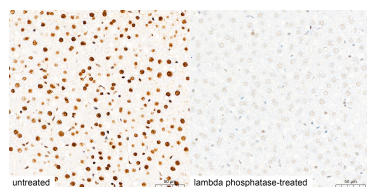
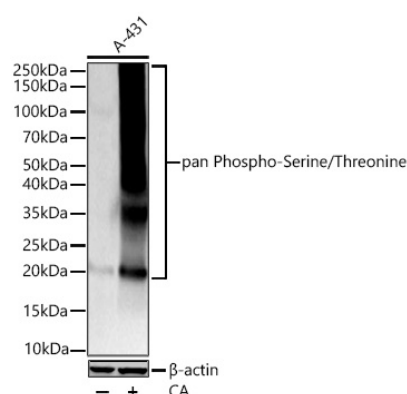
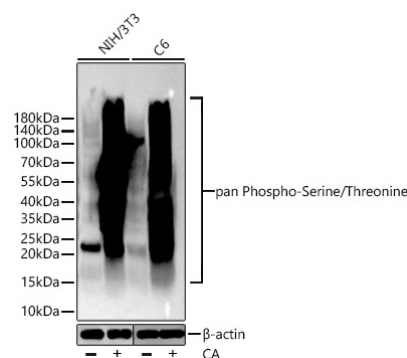
Affinity purification

### Storage

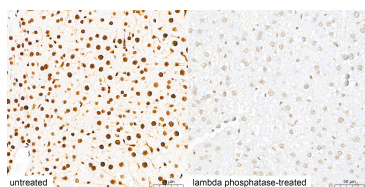
Store at -20°C. Avoid freeze / thaw cycles.

Buffer: PBS with 0.09% Sodium azide,50% glycerol,pH7.3.

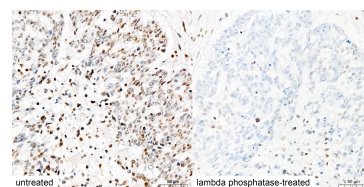
## Validation Data



Immunohistochemistry analysis of paraffin-embedded Rat liver tissue, untreated (left) and lambda phosphatase-treated (right), using pan Phospho-Serine/Threonine Mouse mAb (AP1067) at a dilution of 1:2000 (40x lens). High pressure antigen retrieval performed with 0.01M Citrate Buffer (pH 6.0) prior to IHC staining.



Immunohistochemistry analysis of paraffin-embedded Mouse liver tissue, untreated (left) and lambda phosphatase-treated (right), using pan Phospho-Serine/Threonine Mouse mAb (AP1067) at a dilution of 1:2000 (40x lens). High pressure antigen retrieval performed with 0.01M Citrate Buffer (pH 6.0) prior to IHC staining.



Immunohistochemistry analysis of paraffin-embedded Human lung cancer tissue, untreated (left) and lambda phosphatase-treated (right), using pan Phospho-Serine/Threonine Mouse mAb (AP1067) at a dilution of 1:2000 (40x lens). High pressure antigen retrieval performed with 0.01M Citrate Buffer (pH 6.0) prior to IHC staining.