

A4858

Leader in Biomolecular Solutions for Life Science

MLH1抗体试剂（免疫组织化学）

Catalog No.: A4858



Basic Information

Observed MW

Calculated MW

85kDa

Category

SMab Recombinant Monoclonal Antibody

Applications

IHC-P

Cross-Reactivity

Human, Mouse

CloneNo number

ARC53543 (鄂汉械备20230535号)

Background

The protein encoded by this gene can heterodimerize with mismatch repair endonuclease PMS2 to form MutL alpha, part of the DNA mismatch repair system. When MutL alpha is bound by MutS beta and some accessory proteins, the PMS2 subunit of MutL alpha introduces a single-strand break near DNA mismatches, providing an entry point for exonuclease degradation. The encoded protein is also involved in DNA damage signaling and can heterodimerize with DNA mismatch repair protein MLH3 to form MutL gamma, which is involved in meiosis. This gene was identified as a locus frequently mutated in hereditary nonpolyposis colon cancer (HNPCC).

Recommended Dilutions

IHC-P 1:50 - 1:200

Immunogen Information

Gene ID

4292

Swiss Prot

P40692

Immunogen

A synthetic peptide corresponding to a sequence within amino acids 350-450 of human MLH1 (NP_000240.1).

Synonyms

FCC2; COCA2; HNPCC; MLH-1; hMLH1; HNPCC2; LYNCH2; MMRCS1; H1

Contact



www.abclonal.com

Product Information

Source

Rabbit

Isotype

IgG

Purification

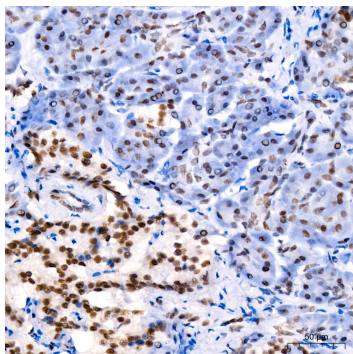
Affinity purification

Storage

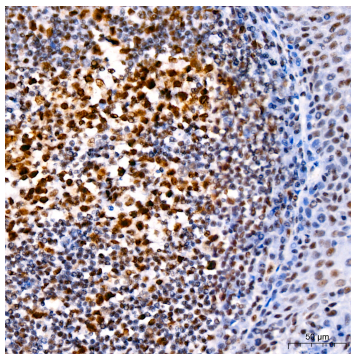
Store at -20°C. Avoid freeze / thaw cycles.

Buffer: PBS with 0.05% proclin300, 0.05% BSA, 50% glycerol, pH7.3.

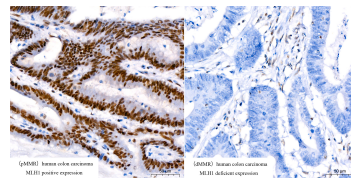
Validation Data



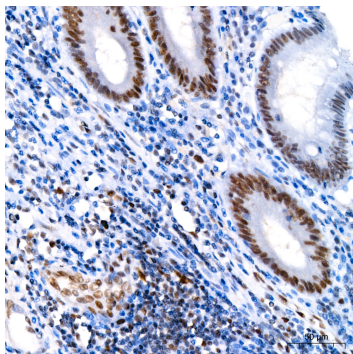
Immunohistochemistry analysis of MLH1 in paraffin-embedded Human pancreas tissue using MLH1抗体试剂 (免疫组织化学) (A4858) at a dilution of 1:100 (40x lens). High pressure antigen retrieval performed with 0.01M Citrate Buffer(pH 6.0) prior to IHC staining.



Immunohistochemistry analysis of MLH1 in paraffin-embedded Human tonsil tissue using MLH1抗体试剂 (免疫组织化学) (A4858) at a dilution of 1:100 (40x lens). High pressure antigen retrieval performed with 0.01M Citrate Buffer(pH 6.0) prior to IHC staining.



Immunohistochemistry analysis of MLH1 in paraffin-embedded Human colon carcinoma tissue, with MLH1 expression (left) and loss of MLH1 expression (right), using MLH1抗体试剂 (免疫组织化学) (A4858) at a dilution of 1:100 (40x lens). High pressure antigen retrieval performed with 0.01M Citrate Buffer(pH 6.0) prior to IHC staining.



Immunohistochemistry analysis of MLH1 in paraffin-embedded Human appendix tissue using MLH1抗体试剂 (免疫组织化学) (A4858) at a dilution of 1:100 (40x lens). High pressure antigen retrieval performed with 0.01M Citrate Buffer(pH 6.0) prior to IHC staining.