

RP01260LQ

Leader in Biomolecular Solutions for Life Science



# Recombinant SARS-COV-2 Spike S1+S2 ECD(S-ECD) Protein

Catalog No.: RP01260LQ **Recombinant** **3 Publications**

## Sequence Information

**Species** SARS-COV-2 **Gene ID** 43740568 **Swiss Prot**

**Tags**  
C-His

### Synonyms

Envelope;SARS-CoV-2 Spike RBD (N501Y);Spike;Spike ECD;Spike RBD;Spike S1;Spike S2;Spike S2 ECD;S1-RBD protein;NCP-CoV RBD Protein;novel coronavirus RBD Protein;2019-nCoV RBD Protein;S glycoprotein Subunit1 RBD Protein

## Product Information

**Source** HEK293 cells **Purification** >97% by SDS-PAGE.

**Endotoxin**  
< 0.1 EU/μg of the protein by LAL method.

### Formulation

Supplied as a 0.22 μm filtered solution in PBS, pH 7.4. Contact us for customized product form or formulation.

### Reconstitution

## Background

The spike protein (S) of coronavirus (CoV) attaches the virus to its cellular receptor, angiotensin-converting enzyme 2 (ACE2). A defined receptor-binding domain (RBD) on S mediates this interaction. The S protein plays key parts in the induction of neutralizing-antibody and T-cell responses, as well as protective immunity.

## Basic Information

### Description

Recombinant SARS-COV-2 Spike S1+S2 ECD(S-ECD) Protein is produced by HEK293 cells expression system. The target protein is expressed with sequence (Val11-Gln1208) of SARS-COV-2(2019-nCoV) S1+S2 ECD (S-ECD) (Accession #YP\_009724390.1) fused with a 6×His tag at the C-terminus.

### Bio-Activity

Measured by its binding ability in a functional ELISA. Immobilized Recombinant SARS-CoV-2 Spike S1+S2 ECD-His at 2 μg/mL (100 μL/well) can bind Recombinant Human ACE2 with a linear range of 0.15-9.92 ng/mL.

### Storage

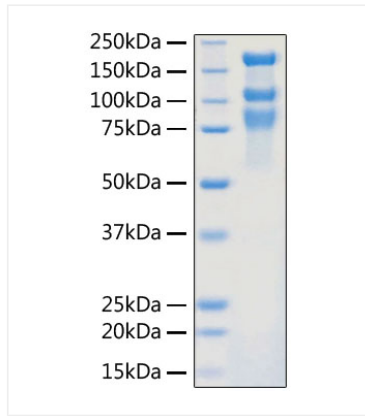
This product is stable at ≤ -70°C for up to 6 months from the date of receipt. For optimal storage, aliquot into smaller quantities after centrifugation and store at recommended temperature. Avoid repeated freeze-thaw cycles. Avoid repeated freeze/thaw cycles.

## Contact

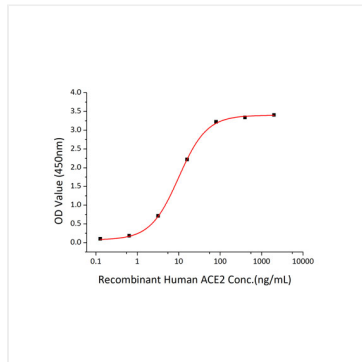


[www.abclonal.com](http://www.abclonal.com)

## Validation Data



Recombinant SARS-COV-2 S1+S2 ECD (S-ECD) Protein with His tag was determined by SDS-PAGE with Coomassie Blue, showing bands around 80,110,180 kDa.



Immobilized Recombinant SARS-COV-2 Spike S1+S2 ECD-His at 2 $\mu$ g/mL (100  $\mu$ L/well) can bind Recombinant Human ACE2 with a linear range of 0.15-9.92 ng/mL.