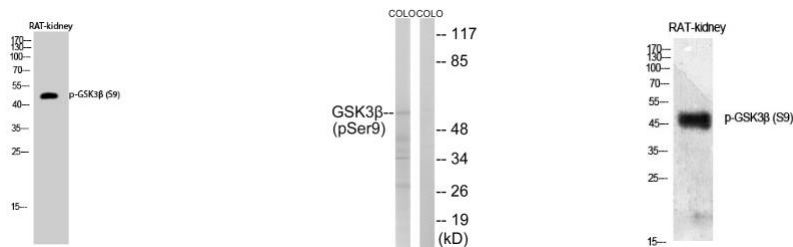


Anti-Phospho-GSK3 Beta (S9) antibody

Cat#NB-22-0445

Cat#NB-22-0445-S

Cat#NB-22-0445-200ul



Western blot analysis of RAT-kidney cells using Phospho-GSK3 Beta (S9) Polyclonal Antibody diluted at 1 : 500

Western blot analysis of GSK3 Beta (Phospho -Ser9) Antibody. The lane on the right is blocked with the GSK3 Beta (Phospho-Ser9) peptide.

Western blot analysis of various cells using Phospho-GSK3 Beta (S9) Polyclonal Antibody diluted at 1 : 500

Description :

Rabbit polyclonal anti-Phospho-GSK Beta (S9) antibody is suitable for use in Western Blot, Immunohistochemistry and ELISA

Product information :

Product Type	Primary antibodies
Applications	WB, IHC-P, ELISA
Host/Source	Rabbit
Reactivity	Human, Mouse, Rat

Clonality	Polyclonal
Concentration	1 mg/ml
Conjugation	Unconjugated
Purification	The antibody was affinity-purified from rabbit antiserum by affinity-chromatography using a epitope-specific immunogen.
Dilution Range	WB 1:500-1:2000 IHC 1:100-1:300
Formulation	ELISA 1:10000 Liquid in PBS containing 50% glycerol, 0.5% BSA and 0.02% sodium azide.
Isotype	IgG
Storage Instruction	Store at -20°C, and avoid repeat freeze-thaw cycles.

Target :

Gene ID	2932
Gene Symbol	GSK3B
Uniprot ID	GSK3B_HUMAN
Immunogen	Synthesized peptide derived from human GSK3beta around the phosphorylation site of S9. 1-80 aa

**Immunogen
Region**

Specificity

Phospho-GSK3 beta (S9) polyclonal antibody detects endogenous levels of GSK3 beta protein only when phosphorylated at S9

For reference only

For Research Use Only. Not for Diagnostic or Therapeutic Use.