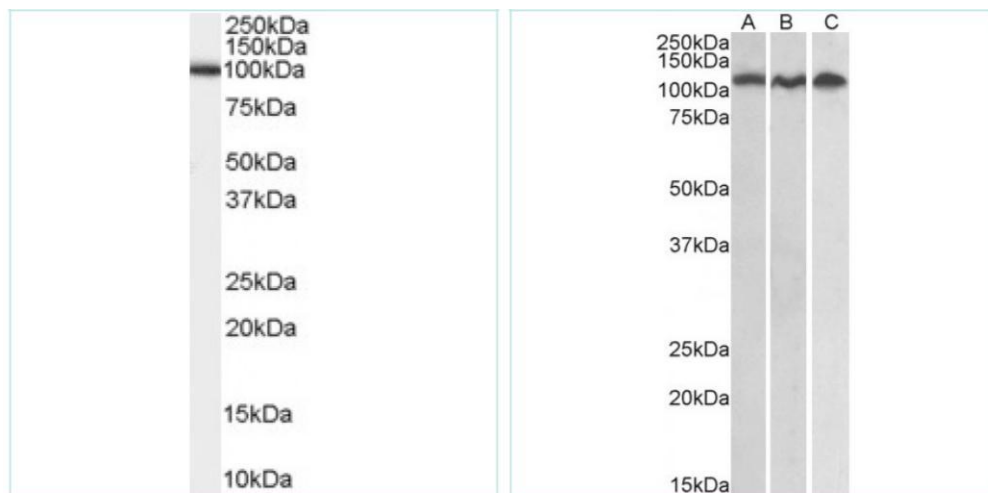


## Anti-ADAM17 antibody

Cat# NB-22-24532



NB-22-24532 staining (0.2 $\mu$ g/ml) of Human Testis lysate (RIPA buffer, 35 $\mu$ g total protein per lane). Primary incubated for 1 hour. Detected by western blot using chemiluminescence.

NB-22-24532 staining (0.3 $\mu$ g/ml) of Daudi (A), Jurkat (B) and HeLa (C) lysates (35 $\mu$ g total protein in RIPA buffer). Primary incubated for 1 hour. Detected by chemiluminescence.

### Product Description

Goat Polyclonal to ADAM17.

### Product Information

<b>Code</b>	NB-22-24532
<b>Host</b>	Goat
<b>Reactivity</b>	Human, Mouse, Rat
<b>Applications</b>	ELISA, WB
<b>Immunogen Region</b>	C-term
<b>Gene ID</b>	11491 (Mouse);
<b>Accession Number</b>	NP_003174.3
<b>Purification</b>	Purified from goat serum by ammonium sulphate precipitation followed by antigen affinity chromatography using the immunizing peptide
<b>Sequence</b>	LQRQNRVDSKETEC
<b>Protein Name</b>	ADAM17 - ADAM metallopeptidase domain 17
<b>Clonality</b>	Polyclonal
<b>Conjugation</b>	Unconjugated
<b>Isotype</b>	IgG

<b>Formulation</b>	0.5 mg/ml in Tris saline, 0.02% sodium azide, pH7.3 with 0.5% bovine serum albumin. Aliquot and store at -20°C. Minimize freezing and thawing.
<b>Storage Instruction</b>	Store at -20°C. Avoid repeated freeze/thaw cycles.

## Target

<b>Database Links</b>	Human UniProt/Swiss-Prot: <a href="#">B2RNB2</a> ; Human Entrez Gene: <a href="#">6868</a> ;
-----------------------	---

## Alternative names

ADAM17 / ADAM metallopeptidase domain 17 / 14-3-3 protein theta antibody, ADAM 17 antibody, ADAM 17 precursor-like protein antibody, adam18 antibody, ADAM metallopeptidase domain 17 (tumor necrosis factor, alpha, converting enzyme) antibody, ADAM metallopeptidase domain 18 antibody, a disintegrin and metallopeptidase domain 17 antibody, a disintegrin and metalloprotease domain 17 antibody, a disintegrin and metalloproteinase domain 17 antibody, a disintegrin and metalloproteinase domain 17 (tumor necrosis factor, alpha, converting enzyme) antibody, AS27\_15679 antibody, AS28\_03594 antibody, CB1\_001616071 antibody, cd156b antibody, CSVP antibody, D623\_10020846 antibody, Disintegrin and metalloproteinase domain-containing protein 17 antibody, disintegrin and metalloproteinase domain-containing protein 17 preproprotein antibody, disintegrin metalloproteinase antibody, GW7\_14103 antibody, H920\_07404 antibody, hypothetical protein antibody, I79\_023268 antibody, M959\_14790 antibody, metalloproteinase ADAM17 antibody, N300\_15343 antibody, N301\_06687 antibody, N302\_01868 antibody, N303\_10496 antibody, N305\_01622 antibody, N306\_06091 antibody, N308\_15455 antibody, N309\_15037 antibody, N312\_13594 antibody, N320\_07078 antibody, N321\_01084 antibody, N324\_05176 antibody, N325\_01740 antibody, N327\_09427 antibody, N328\_01582 antibody, N330\_04122 antibody, N331\_09920 antibody, N332\_03079 antibody, N334\_05173 antibody, N335\_02068 antibody, N339\_07142 antibody, N340\_05111 antibody, NISBD antibody, NISBD1 antibody, PANDA\_012401 antibody, snake venom-like protease antibody, tace antibody, TNF-alpha convertase antibody, TNF-alpha converting enzyme antibody, TNF-alpha-converting enzyme antibody, TREES\_T100010477 antibody, tumor necrosis factor alpha converting enzyme antibody, tumor necrosis factor-alpha-converting enzyme antibody, tumor necrosis factor, alpha, converting enzyme antibody, UY3\_00726 antibody, Y1Q\_013705 antibody, Y956\_15341 antibody, Z169\_02346 antibody

<b>Sequence and Domain Family</b>	Contains 1 peptidase M12B domain
-----------------------------------	----------------------------------

***For reference only***

***For Research Use Only. Not for Diagnostic or Therapeutic Use.***