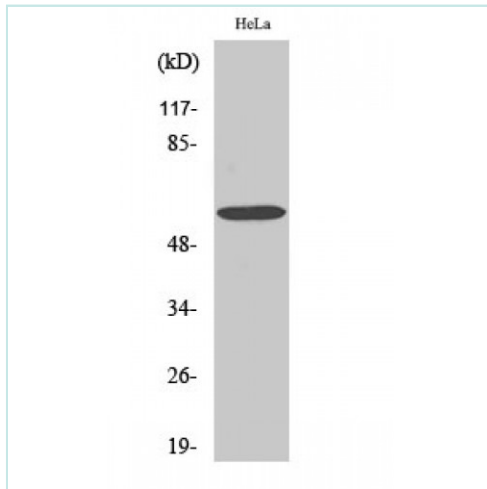


G3BP1 antibody



Product Description

Rabbit Polyclonal to G3BP1.

Product Information

Code:	NB-22-3171
Clonality	Polyclonal
Host	Rabbit
Reactivity	Human, Mouse, Monkey
Applications	WB, IHC, ELISA
Immunogen	Synthesized peptide derived from human G3BP1 around the non-phosphorylation site of S232.
Immunogen Region	170-250aa
Conjugation	Unconjugated
Gene ID	10146 (Human); 27041 (Mouse);
Isotype	IgG
Dilution range	WB 1:500-1:2000; IHC 1:100-1:300; ELISA 1:10000;
Specificity	G3BP1 Polyclonal Antibody detects endogenous levels of G3BP1 protein.
Swiss-Prot Key	Q13283 (Human); P97855 (Mouse)
Purification	The antibody was affinity-purified from rabbit antiserum by affinity-chromatography using epitope-specific immunogen.
Form	Liquid in PBS containing 50% glycerol, 0.5% BSA and 0.02% sodium azide.
Molecular Weight	52/60 kDa
Concentration	1 mg/ml
Storage	Store at -20°C. Avoid repeated freeze/thaw cycles.
Alternative names	G3BP1; G3BP; Ras GTPase-activating protein-binding protein 1; G3BP-1; ATP-dependent DNA helicase VIII; hDH VIII; GAP SH3 domain-binding protein 1
Note	For research use only.