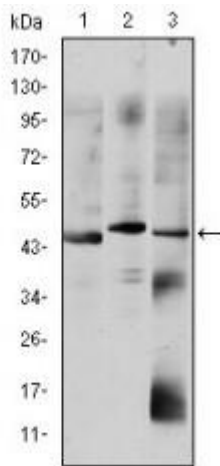


Anti-OTX2 Monoclonal Antibody (Clone: 1H12C4B5)

Cat # NB-22-8390 (100 µL)

Cat # NB-22-8390-S (20 µL)



Description

Mouse monoclonal to OTX2.

Product informations

Model	NB-22-8390
Host	Mouse
Reactivity	Human
Applications	ELISA, FC, IF, IHC, WB
Immunogen	Purified recombinant fragment of human OTX2 expressed in E. Coli.
Gene ID	5015
Gene Symbol	OTX2
Dilution range	WB 1:500-1:2000IHC 1:200-1:1000IF 1:200-1:1000FC 1:200-1:400ELISA 1:10000
Specificity	OTX2 Monoclonal Antibody detects endogenous levels of OTX2 protein.
Purification	Affinity purification
Clone ID	1H12C4B5
Note	For Research Use Only (RUO).
Protein Name	Homeobox protein OTX2 Orthodenticle homolog 2
Clonality	Monoclonal
Conjugation	Unconjugated

Isotype	IgG1
Formulation	Ascitic fluid containing 0.03% sodium azide.
Storage Instruction	Store at -20°C, and avoid repeat freeze-thaw cycles.
Database Links	HGNC:8522OMIM:600037
Alternative Names	Homeobox protein OTX2 Orthodenticle homolog 2
Function	Transcription factor probably involved in the development of the brain and the sense organs. Can bind to the bicoid/BCD target sequence (BTS): 5'-TCTAATCCC-3'.
Cellular Localization	Nucleus