

A4518

Leader in Biomolecular Solutions for Life Science



www.abclonal.com

KIFAP3 Rabbit pAb

Catalog No.: A4518

1 Publications

Basic Information

Observed MW

110kDa

Calculated MW

91kDa

Category

Polyclonal Antibody

Applications

WB,IF,ICC,IP,ELISA

Cross-Reactivity

Human,Mouse,Rat

Background

The small G protein GDP dissociation stimulator (smg GDS) is a regulator protein having two activities on a group of small G proteins including the Rho and Rap1 family members and Ki-Ras; one is to stimulate their GDP/GTP exchange reactions, and the other is to inhibit their interactions with membranes. The protein encoded by this gene contains 9 'Armadillo' repeats and interacts with the smg GDS protein through these repeats. This protein, which is highly concentrated around the endoplasmic reticulum, is phosphorylated by v-src, and this phosphorylation reduces the affinity of the protein for smg GDS. It is thought that this protein serves as a linker between human chromosome-associated polypeptide (HCAP) and KIF3A/B, a kinesin superfamily protein in the nucleus, and that it plays a role in the interaction of chromosomes with an ATPase motor protein. Several transcript variants encoding different isoforms have been found for this gene.

Recommended Dilutions

WB 1:500 - 1:2000

IF/ICC 1:50 - 1:200

IP 0.5µg-4µg antibody for
200µg-400µg extracts
of whole cells

Immunogen Information

Gene ID

22920

Swiss Prot

Q92845

Immunogen

Recombinant fusion protein containing a sequence corresponding to amino acids 1-200 of human KIFAP3 (NP_055785.2).

Synonyms

FLA3; KAP3; SMAP; KAP-1; KAP-3; Smg-GDS; dJ190I16.1; KIFAP3

Contact



www.abclonal.com

Product Information

Source

Rabbit

Isotype

IgG

Purification

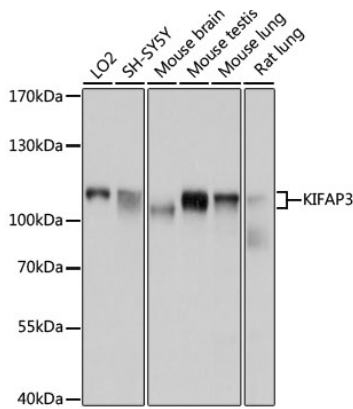
Affinity purification

Storage

Store at -20°C. Avoid freeze / thaw cycles.

Buffer: PBS with 0.02% sodium azide,50% glycerol,pH7.3.

Validation Data



Western blot analysis of various lysates using KIFAP3 Rabbit pAb (A4518) at 1:1000 dilution.

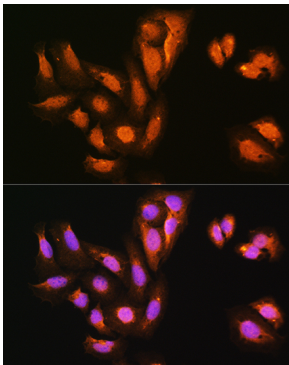
Secondary antibody: HRP Goat Anti-Rabbit IgG (H+L) (AS014) at 1:10000 dilution.

Lysates/proteins: 25µg per lane.

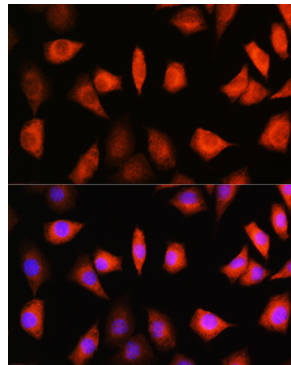
Blocking buffer: 3% nonfat dry milk in TBST.

Detection: ECL Basic Kit (RM00020).

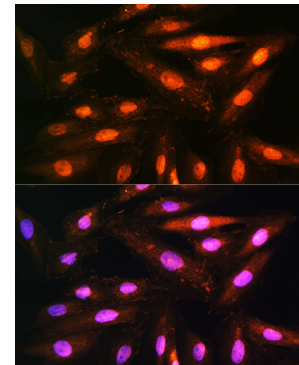
Exposure time: 5s.



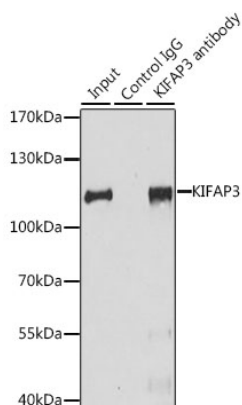
Immunofluorescence analysis of U2OS cells using KIFAP3 Rabbit pAb (A4518) at dilution of 1:100. Secondary antibody: Cy3 Goat Anti-Rabbit IgG (H+L) (AS007) at 1:500 dilution. Blue: DAPI for nuclear staining.



Immunofluorescence analysis of L929 cells using KIFAP3 Rabbit pAb (A4518) at dilution of 1:100. Secondary antibody: Cy3 Goat Anti-Rabbit IgG (H+L) (AS007) at 1:500 dilution. Blue: DAPI for nuclear staining.



Immunofluorescence analysis of H9C2 cells using KIFAP3 Rabbit pAb (A4518) at dilution of 1:100. Secondary antibody: Cy3 Goat Anti-Rabbit IgG (H+L) (AS007) at 1:500 dilution. Blue: DAPI for nuclear staining.



Immunoprecipitation analysis of 200 µg extracts of HeLa cells, using 3 µg KIFAP3 antibody (A4518). Western blot was performed from the immunoprecipitate using KIFAP3 antibody (A4518) at a dilution of 1:1000.