

AS088

Leader in Biomolecular Solutions for Life Science



Rabbit Anti-Chicken IgY Fab

Catalog No.: AS088

Basic Information

Observed MW

25kDa

Calculated MW

Category

Secondary Antibody

Applications

WB

Cross-Reactivity

CloneNo number

ARC56601

Background

Secondary antibodies are affinity-purified antibodies which will work with target-specific primary antibody in the detection, sorting or purification of its specified target. Secondary antibodies offer increased versatility enabling users to use many detection systems (e.g. HRP, AP, fluorescence). They can also provide greater sensitivity through signal amplification as multiple secondary antibodies. Most commonly, secondary antibodies are generated by immunizing the host animal (different from host species of primary antibody) with a pooled population of normal immunoglobulins from the host species of primary antibody and can be further purified and modified (i.e. antibody fragmentation, label conjugation, etc.) to ensure well-characterized specificity to corresponding normal immunoglobulins.

Recommended Dilutions

WB 1:2000 - 1:20000

Immunogen Information

Gene ID Swiss Prot

Immunogen

Chicken IgY

Synonyms

Contact

 | www.abclonal.com

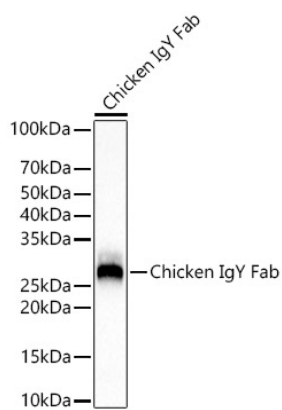
Product Information

Source	Isotype	Purification
Rabbit	IgG	Affinity purification

Storage

Store at -20°C. Avoid freeze / thaw cycles.
Buffer: PBS with 0.05% proclin300,0.05% BSA,50% glycerol,pH7.3.

Validation Data



Western blot analysis of Chicken IgY Fab, using Chicken IgY Fab antibody (AS088) at 1:20000 dilution.
Secondary antibody: HRP Goat Anti-Rabbit IgG (H+L) (AS014) at 1:10000 dilution.
Lysates/proteins: 25µg per lane.
Blocking buffer: 3% nonfat dry milk in TBST.
Detection: ECL Basic Kit (RM00020).
Exposure time: 1s.