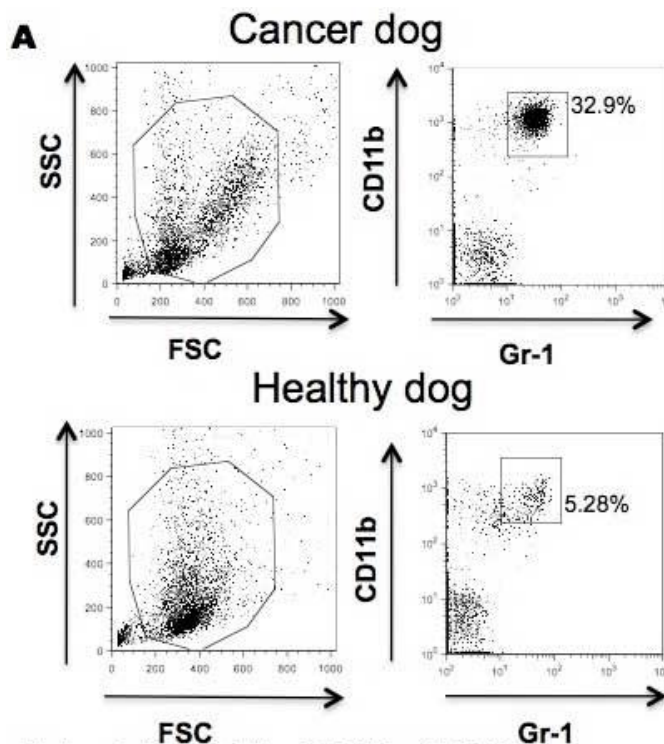


Anti-Dog CD11b [Clone CA16.3E10]

Cat # NB-47-03081-2ML



Citation: Goulart MR, Pluhar GE, Ohlfest JR (2012) Identification of Myeloid Derived Suppressor Cells in Dogs with Naturally Occurring Cancer. PLoS ONE 7(3): e33274. DOI: 10.1371/journal.pone.0033274



Mouse anti-CD11b and Gr-1 antibodies cross-react with canine samples. Fresh PBMCs from healthy dog and cancer patients were isolated by Ficoll, stained with anti-mouse CD11b and anti-mouse Gr-1 antibodies.

Description

Mouse monoclonal anti Canine CD11b

Product Information

Host:	Mouse
Applications:	Flow Cytometry (Neat) Immunohistology - Frozen ¹ Immunoprecipitation
Reactivity:	Dog, cross react with Goat, Cat, Mustelid, Pig, Bovine, Mink, Beluga whale
Clonality:	Monoclonal
Clone ID:	CA16.3E10
Conjugation:	Unconjugated
Isotype:	IgG1
Formulation:	Tissue Culture Supernatant - liquid in Phosphate buffered saline with <0.1% Sodium Azide (NaN ₃)

Dilution Range: ¹The epitope recognised by this antibody is reported to be sensitive to formaldehyde fixation and tissue processing. We recommends the use of acetone fixation for frozen sections.

Where this antibody has not been tested for use in a particular technique this does not necessarily exclude its use in such procedures. Suggested recommended dilutions are given as guide only. It is recommended that the user titrates the antibody for use in their own system using appropriate negative/positive controls.

Flow Cytometry: Use 10ul of the suggested working dilution to label 10⁶ cells or 100µl whole blood WB 1:250-1:2000

Storage Instruction: This product is shipped at ambient temperature. It is recommended to aliquot and store at -20°C on receipt. When thawed, aliquot the sample as needed. Keep aliquots at 2-8°C for short term use (up to 4 weeks) and store the remaining aliquots at -20°C.

Avoid repeated freezing and thawing as this may denature the antibody. Storage in frost-free freezers is not recommended.

Target

Synonyms: Integrin Alpha M Chain
MAC-1

Immunogen: Affinity purified beta-2 integrins from splenic lysate

References

1. Danilenko, D.M. et al. (1992) Canine leukocyte cell adhesion molecules (LeuCAMs): characterization of the CD11/CD18 family. *Tissue Antigens* 40: 13-21.
2. Brodersen, R. et al. (1998) Analysis of the immunological cross reactivities of 213 well characterized monoclonal antibodies with specificities against various leucocyte surface antigens of human and 11 animal species. *Vet Immunol Immunopathol.* 64 (1): 1-13.
3. Sampaio, W.M. (2007) In vitro binding and survival assays of Leishmania parasites to peripheral blood monocytes and monocyte-derived macrophages isolated from dogs naturally and experimentally infected with Leishmania chagasi. *BMC Vet Res.* 3:11.
4. Maiolini, A. et al. (2012) Toll-like receptors 4 and 9 are responsible for the maintenance of the inflammatory reaction in canine steroid-responsive meningitis-arteritis, a large animal model for neutrophilic meningitis. *J Neuroinflammation.* 9: 226.
5. Yuasa, K. et al. (2007) Injection of a recombinant AAV serotype 2 into canine skeletal muscles evokes strong immune responses against transgene products. *Gene Ther.* 14: 1249-60.
6. Kamstock, D. et al. (2006) Liposome-DNA complexes infused intravenously inhibit tumor angiogenesis and elicit antitumor activity in dogs with soft tissue sarcoma. *Cancer Gene Ther.* 13: 306-17.
7. Sherger, M. et al. (2012) Identification of myeloid derived suppressor cells in the peripheral blood of tumor bearing dogs. *BMC Vet Res.* 8: 209.
8. Gregorevic, P. et al. (2009) Evaluation of vascular delivery methodologies to enhance rAAV6-mediated gene transfer to canine striated musculature. *Mol Ther.* 17: 1427-33.
9. Figueiredo, M.M. et al. (2013) Expression of Toll-like Receptors 2 and 9 in cells of dog jejunum and colon naturally infected with Leishmania infantum. *BMC Immunol.* 14: 22.

10. Thompson, L.A. & Romano, T.A. (2015) Beluga (*Delphinapterus leucas*) granulocytes and monocytes display variable responses to in vitro. pressure exposures. *Front Physiol.* 6: 128.
11. Kuraoka, M. et al. (2016) Serum Osteopontin as a Novel Biomarker for Muscle Regeneration in Duchenne Muscular Dystrophy. *Am J Pathol.* 186 (5): 1302-12.
12. Gow, A.G. et al. (2016) Low-Density Lipoprotein Uptake Demonstrates a Hepatocyte Phenotype in the Dog, but Is Nonspecific. *Stem Cells Dev.* 25 (1): 90-100.
13. Paltrinieri, S. et al. (2012) Flow cytometric detection of alpha-1-acid glycoprotein on feline circulating leucocytes. *Aust Vet J.* 90 (8): 291-6.
14. Michael, H.T. et al. (2013) Isolation and characterization of canine natural killer cells. *Vet Immunol Immunopathol.* 155 (3): 211-7.
15. Vermeulen, B.L. et al. (2013) Suppression of NK cells and regulatory T lymphocytes in cats naturally infected with feline infectious peritonitis virus. *Vet Microbiol.* 164 (1-2): 46-59.
16. Guth, A.M. et al. (2013) Liposomal clodronate treatment for tumour macrophage depletion in dogs with soft-tissue sarcoma. *Vet Comp Oncol.* 11 (4): 296-305.
17. Wijewardana, V. et al. (2013) Production of canine soluble CD40 ligand to induce maturation of monocyte derived dendritic cells for cancer immunotherapy. *Vet Immunol Immunopathol.* 156 (1-2): 121-7.
18. Mastroilli, C. et al. (2012) Multifocal cutaneous histiocytic sarcoma in a young dog and review of histiocytic cell immunophenotyping. *Vet Clin Pathol.* 41 (3): 412-8.
19. Yu, D.H. et al. (2012) Pathophysiologic and immunologic changes in a canine endotoxemia over a period of 24 hours. *J Vet Med Sci.* 74 (5): 537-44.
20. Olyslaegers, D.A. et al. (2013) Altered expression of adhesion molecules on peripheral blood leukocytes in feline infectious peritonitis. *Vet Microbiol.* 166 (3-4): 438-49.
21. Wasserman, J. et al. (2012) Suppression of canine myeloid cells by soluble factors from cultured canine tumor cells. *Vet Immunol Immunopathol.* 145 (1-2): 420-30.
22. Kruger, E.F. et al. (2003) Bovine monocytes induce immunoglobulin production in peripheral blood B lymphocytes. *Dev Comp Immunol.* 27 (10): 889-97.
23. Kuraoka, M. et al. (2016) Serum Osteopontin as a Novel Biomarker for Muscle Regeneration in Duchenne Muscular Dystrophy. *Am J Pathol.* 186 (5): 1302-12.
24. Beirão, B.C.B. et al. (2020) A blocking antibody against canine CSF-1R matured by limited CDR mutagenesis *Antibody Ther.* 3.3: 193–204.
25. Wang, L. et al. (2019) Electroacupuncture-induced cannabinoid receptor expression in repair of abducens nerve. *Int J Neurosci.* 129 (9): 923-9.
26. Hutchison, S. et al. (2019) Characterization of myeloid-derived suppressor cells and cytokines GM-CSF, IL-10 and MCP-1 in dogs with malignant melanoma receiving a GD3-based immunotherapy. *Vet Immunol Immunopathol.* 216: 109912.
27. Jarosz, Ł. et al. (2021) The Effect of Feed Supplementation with EM Bokashi® Multimicrobial Probiotic Preparation on Selected Parameters of Sow Colostrum and Milk as Indicators of the Specific and Nonspecific Immune Response. *Probiotics Antimicrob Proteins.* Oct 01 [Epub ahead of print].
28. Beirão, B.C.B. et al. (2020) A blocking antibody against canine CSF-1R matured by limited CDR mutagenesis. *Antib Ther.* 3 (3): 193-204.
29. Knebel, A. et al. (2021) Measurement of canine Th17 cells by flow cytometry. *Vet Immunol Immunopathol.* 243: 110366.
30. Riccardo, F. et al. (2022) Antigen mimicry as an effective strategy to induce CSPG4-targeted immunity in dogs with oral melanoma: a veterinary trial. *J Immunother Cancer.* 10(5):e004007. [Epub ahead of print].

***For reference only
For Research Use Only. Not for Diagnostic or Therapeutic Use.***